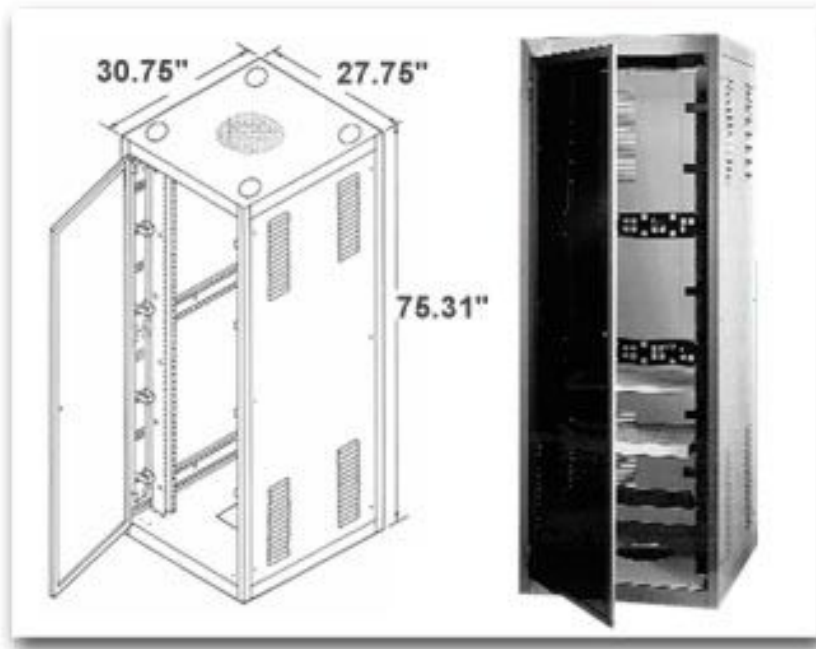




Large Cabinet Racks
**Distribution Cabinet
Assemblies**



Design Features

- *Large 27" wide x 75.31" high x 30.75" overall depth ventilated cabinet with 19" x 70" E. I.A. panel space.
- *Four 4" diameter cable access holes in the top and one 9.56" square hole in the base.
- *Two pairs of adjustable panel mounting rails (Use #7346 screws - order separately.
- *Easy to use adjustable cable management system.
- *Lockable steel rear and see through Econoglas front doors.
- *1200# equipment load capacity.

Distribution Cabinet Assembly				
Catalog Number	Drawings	Panel Space	Overall Dimensions	Weight Lbs.
DC-8050		19.00" x 70.00"	75.31"H x 27.00"W x 30.75"D	270



PART NAME

DATA COM DISTRIBUTION CABINET

PART No.

DC-8050

CABINET RACK

MATERIAL:

PANEL MOUNTING RAILS _____ 12 GA. STEEL
VERTICAL RAILS _____ 14 GA. STEEL
TOP, BOTTOM, PLATES &
RAIL SUPPORTS _____ 16 GA. STEEL
SIDES & REAR DOOR _____ 20 GA. STEEL

FINISH:

FRAME ASSEMBLY, SIDES, REAR DOOR
& REAR DOOR HINGES _____ BLACK TEXTURE
_____ ROYAL BLUE TEXTURE
_____ WHITE TEXTURE
PANEL MOUNTING RAILS _____ SMOOTH BLACK

CABLE MANAGEMENT PANEL

MATERIAL: 16 GA. STEEL
FINISH: BLACK

CABLE CLIP BRACKETS

MATERIAL: 16 GA. SPRING STEEL
FINISH: BLACK

LOCKING PLEXIGLAS DOOR

MATERIAL:

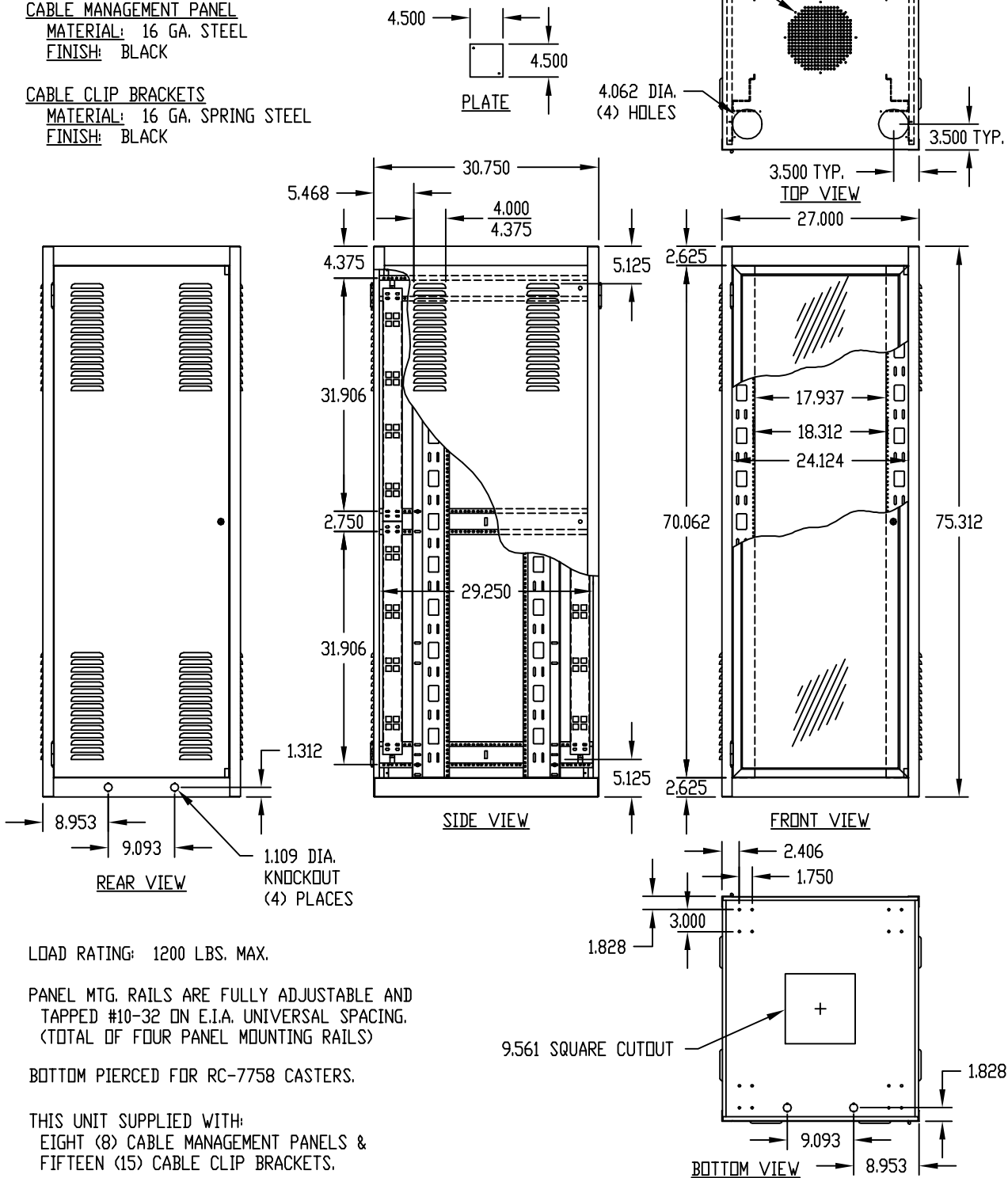
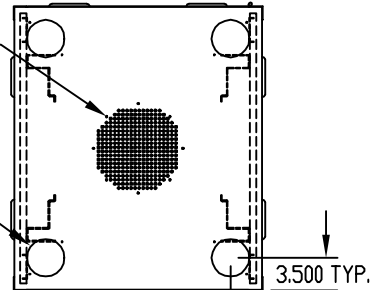
DOOR FRAME _____ ALUMINUM EXTRUSION
PLEXIGLAS _____ 3/16 THICK

FINISH:

ALUMINUM EXTRUSIONS _____ CLEAR ANODIZED
PLEXIGLAS _____ SMOKE GRAY
DOOR HINGES _____ METALLIC GRAY

FULL LENGTH ALUMINUM EXTRUSION FRAMED
LOCKING PLEXIGLAS DOOR FLUSH MOUNTED.

MOUNTING PROVISIONS
FOR OPTIONAL FAN



LOAD RATING: 1200 LBS. MAX.

PANEL MTG. RAILS ARE FULLY ADJUSTABLE AND
TAPPED #10-32 ON E.I.A. UNIVERSAL SPACING.
(TOTAL OF FOUR PANEL MOUNTING RAILS)

BOTTOM PIERCED FOR RC-7758 CASTERS.

THIS UNIT SUPPLIED WITH:
EIGHT (8) CABLE MANAGEMENT PANELS &
FIFTEEN (15) CABLE CLIP BRACKETS.